

New geodata services for the University of Bern

Learn how to find and access geodata for your research or studies

Silvan Christen and Aline Frank, Fachreferat Naturwissenschaften, UB Bern

Coffee & Bit(e)s spring 2020



Geodata

Digital geospatial information



- Geodata can be defined as digital information with a spatial relation on the earth's surface
- Subscription of different geodata products and platforms
- Platforms to search for (historical) printed maps and digitized printed maps are not the focus of this lecture, but links are provided at the end
- Collaboration with the Institute of Geography (GIUB) and the IT Services Office (ID)

Geodata for the University of Bern

What the University Library has to offer

GeoVITe – browser-based access to geodata covering Switzerland & canton of Zurich



swisstopo – Swiss geodata hosted at University Bern



BFS – Swiss statistical geodata



Geofacets – validated geoscience information for geoscientists

Geofacets™

Our website...

... as a starting point

[Link to the geodata website](#)

- Details about the available data products
- Ways to access them
- Terms of use and citation requirements
- Information about other Swiss geodata sources

Geodata services

GEODATA FOR THE UNIVERSITY OF BERN



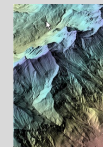
Access to spatial information

Geodata is digital information with a spatial relation on the earth's surface. The University Library Bern provides access to several up-to-date Swiss geodata sources for members of the University of Bern. Please consider the terms of use for each data source below.

GeoVITe – geodata service covering Switzerland & canton of Zurich	+
swisstopo – Swiss geodata hosted at University Bern	+
BFS – Swiss statistical geodata	+
Other Swiss geodata	+

GeoVITe

Browser-based access to Swiss geodata



<https://geovite.ethz.ch>

- Browser-based access to geodata for research and teaching provided by ETH Zurich
- Up-to-date and older swisstopo geodata from Switzerland and the Canton of Zurich
- Access via browser, no data analysis possible in browser (only visualisation and download), further processing in your own GIS program
- Important: Size of the data excerpt is limited and depends on layer (e.g., max area for National Map 1:25,000: 20,250 km²)
- Long time series available (e.g., National Maps 1:25,000: 1952–2019)

GeoVITe

What you see is what you get

The screenshot displays the GeoVITe web application interface. At the top, there is a search bar and a user login status: "Logged in as Silvan Christen" with "Logout" and "Help" buttons. The main map area shows a topographic relief map of a mountainous region with a green rectangular selection box. On the left, a "Time Controls" panel is open, showing "National Maps with Relief" and a grid of years from 1853 to 2000. The "1:25000" scale is selected, and the "Latest" year is chosen. On the right, a "SELECT DATASETS" sidebar lists "Topographic Raster Maps" with options for different scales (1:10000, 1:25000, 1:50000, 1:100000, 1:200000, 1:500000). The "1:25000" option is checked. Below this, the "ACTIVE LAYERS" section shows the selected "1:25000" layer with a "Latest" button and a "Show/hide all" checkbox. The bottom status bar shows "CH1903+ / LV95" and "Data ©2004-2019 swisstopo (5704 000 000)".

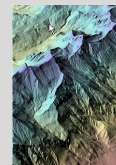
swisstopo

Swiss geodata hosted at University Bern



[Link to the geodata website](#)

- Up-to-date and older data from [swisstopo](#) (Federal Office of Topography) are hosted locally at University Bern.
- Subscription of swisstopo geodata products → updates uploaded to our server
- Additionally, there are some geodata of the canton of Bern on the server.
- Please visit our [website](#) to check whether you need an additional permission by swisstopo to use and publish the data, and how you cite it in your publication.

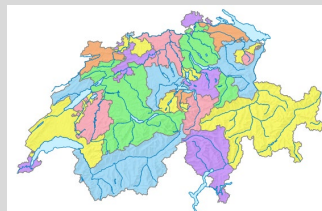


Federal Statistical Office BFS

Swiss statistical geodata

[Link to the geodata website](#)

- Subscription of the “Geodatenabonnement PRO”
- Different data sets such as population census, business census, land use statistics, etc.



Questions & support

If you have questions on how to find and download the desired data, please contact us:

geodata@ub.unibe.ch

Links

Analog and digitized (historical) maps

- [Map collections of the University Library Bern](#)
- www.kartenportal.ch
- www.e-rara.ch
- www.e-manuscripta.ch
- ethorama.library.ethz.ch
- www.oldmapsonline.org
- www.geofacets.com

Links

Geodata / Interactive maps (Switzerland)

- map.geo.admin.ch
- www.geodienste.ch
- www.kkgeo.ch
- Geoportal des Kantons Bern: <https://www.geo.apps.be.ch/de>
- www.geocat.ch
- www.openstreetmap.ch
- www.opendata.swiss

Links

Geodata / Interactive maps (global)

- data.opengeoportal.org
- <http://inspire-geoportal.ec.europa.eu/> (INSPIRE)
- <https://landsatlook.usgs.gov> (Landsat)
- <https://scihub.copernicus.eu/> (Sentinel)
- www.geoportal.de
- www.geofabrik.de

Next coffee lectures

Ten tips to improve your scientific writing

11th June 2020, 15:15-15:30, online on [Zoom](#)

Dr. Kali Tal, lecturer academic writing, Medical Library, University Library Bern

Open Science update: Publishing with the new Open Access fund and Read&Publish models

17th June 2020, 15:15-15:30, online on [Zoom](#)

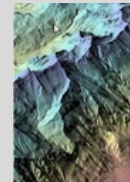
Jennifer Morger and Dr. Gero Schreier, Open Science team, University Library Bern



Questions?

u^b

b
UNIVERSITÄT
BERN



Thank you for your attention

u^b

b
UNIVERSITÄT
BERN

Silvan Christen and Aline Frank, Fachreferat Naturwissenschaften, UB Bern

Coffee & Bit(e)s spring 2020

@ www.unibe.ch/ub/sciencelibrary → see «Coffee & Bit(e)» for lecture notes

