

BORIS Portal

Research Data and Projects

Open Science, University library of Bern

BORIS Portal

Overview

- Project collection of the University of Bern
- A research data repository for researchers at Bern University
- Questions and live demonstration



BORIS Portal

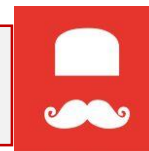


Research Data



Projects

BORIS Publications



BORIS Theses



BORIS Portal: Projects

What are the goals?

- Document a research project
- Share the information with project partners
- Keep record of the research process
- Improve visibility of research outputs

BORIS Portal: Project

What does it contain?

Information about research projects:

- Contributors: principal investigators, researchers and contact person
- Project title and abstract
- Involved organizations
- Relations: other projects, data, publications
- Documents

Information about funding:

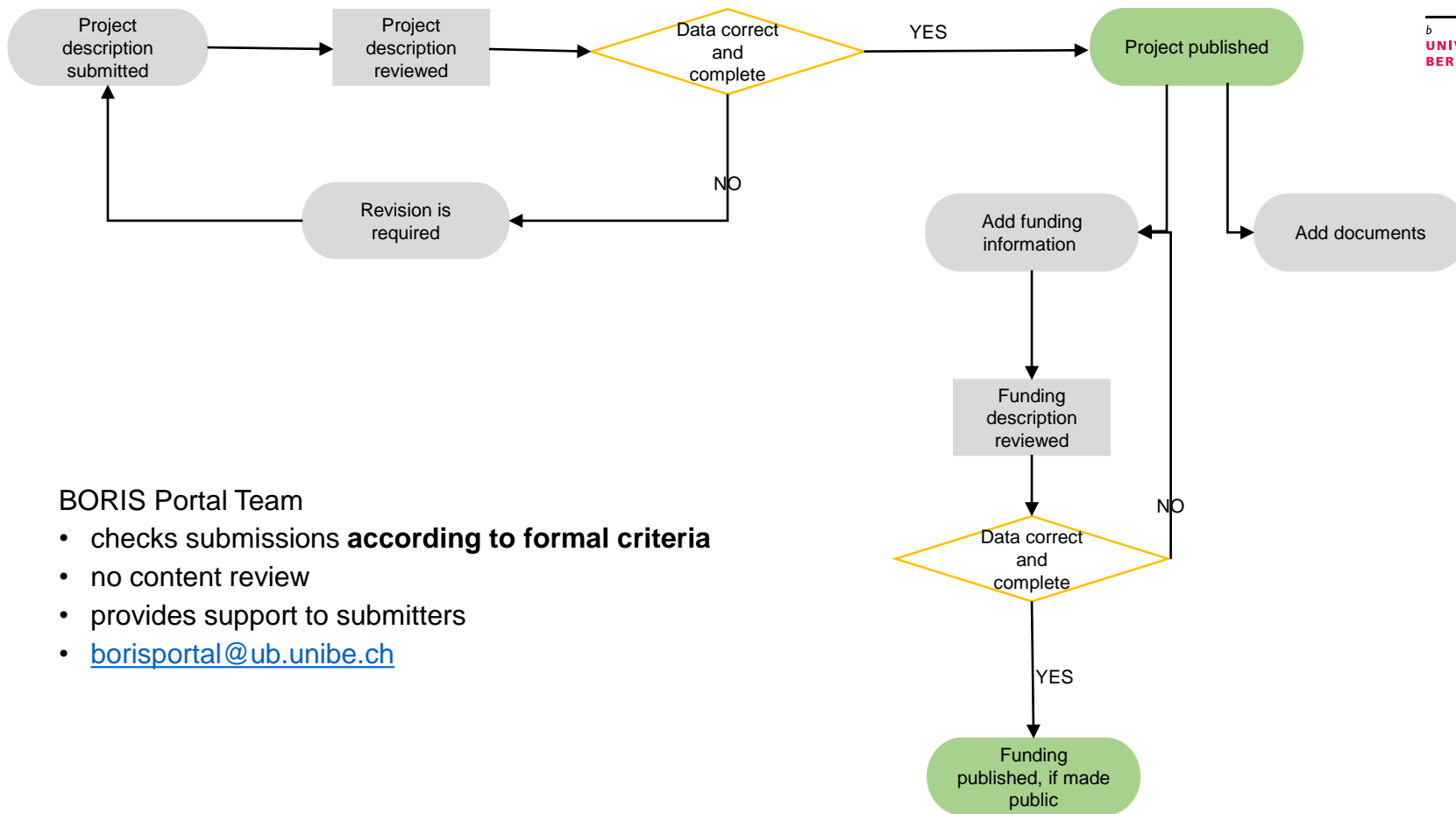
- Funders
- Project duration
- Grant number and grant amount



BORIS Portal: Projects

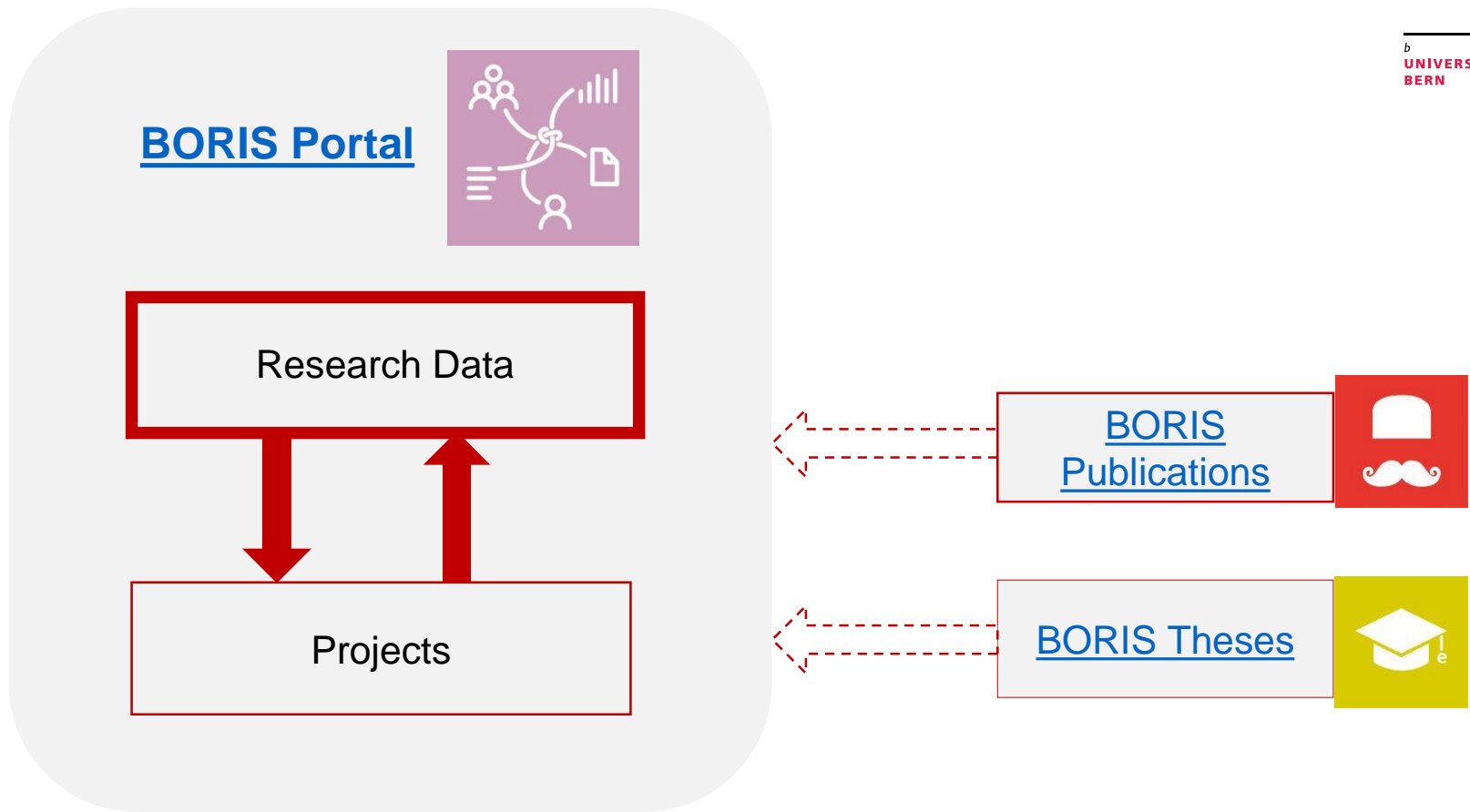
What are the benefits?

- Helps to document project information and research data outputs
- Bundles information about internal, national and international research collaborations
- Enables you to share your research information with project partners
- Connects your research information with your research output
- Increases the visibility of your research for industry and society



BORIS Portal Team

- checks submissions **according to formal criteria**
- no content review
- provides support to submitters
- borisportal@ub.unibe.ch



BORIS Portal: Research Data

What is it?

- Institutional Research Data repository of Bern University
- Upload research data and documentation
- Share research data world-wide
- Manage access to data
- Can be used independently from Boris Portal Projects

BORIS Portal: Research Data

Technical characteristics

Availability and Cost

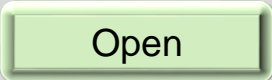
- Open for all researchers at UniBE & Inselspital
- Free to use for up to 1 TB per year / person
- Individual solutions for larger volumes of data

Security and Trust

- Part of the IT system of UniBE
- No sensitive data upload

BORIS Portal: Research Data

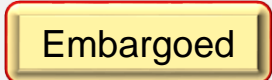
Managing Access

A light green button with rounded corners and a thin border, containing the word 'Open' in black text.

Open

Open access to dataset.

Metadata and documentation are always CC0.

A yellow button with rounded corners and a thin border, containing the word 'Embargoed' in black text.

Embargoed

Enter date after which dataset will be released.

An orange button with rounded corners and a thin border, containing the word 'Restricted' in black text.

Restricted

Upload dataset and grant access on request.

A red button with rounded corners and a thin border, containing the word 'Closed' in white text.

Closed

No data upload, but meta-data can be entered to verify existence of dataset.

Data Transfer Agreement

- recommended for data that cannot be shared openly
- individually define re-use conditions for dataset
- share DTA along with data for others to download and sign

BORIS Portal: Research Data

FAIR Data

Findable, Accessible, Interoperable, Reusable

Good practice for data sharing

Essential for complying with requirements of funders (EU, SNF)

Sensitive data can be under restricted/closed access and still be FAIR!

BORIS Portal

- ✓ DOI for datasets
- ✓ Describe data with metadata
- ✓ Metadata standard: Dublin Core
- ✓ Metadata always openly accessible ([CC0](#))
- ✓ Upload documentation
- ✓ Data access management
- ✓ Licensing: Creative Commons, software licenses, custom licenses
- ✓ Longterm preservation policy (at least 10 years)

BORIS Portal: Research Data Review and Support

BORIS Portal Team

- checks research data submissions **according to formal criteria** (valid file format and layout, exclusion of spam) before release
- no content review
- provides support to research data submitters
- borisportal@ub.unibe.ch



BORIS Portal: Research Data

Why use it?

- Share research data with the community world-wide
- Comply with funder requirements (SNF, EU)
- Manage access to data
- Link research data to publications and project information
- Non-commercial
- Individual support and review from OS team

BORIS Portal

Any questions so far?

BORIS Portal

Thank You for Your Feedback!

What is your opinion on BORIS Portal?
Do you miss a feature?
Please let us know!

<https://bit.ly/3oQyath>



Open Science

Get in touch!

Website www.unibe.ch/ub/openscience

E-mail openscience@ub.unibe.ch

Newsletter www.unibe.ch/ub/osnews

Blog <https://biblio.unibe.ch/bosb>

Twitter [@opensciencebern](https://twitter.com/opensciencebern)

BORIS PORTAL



Data

Manage and make accessible research and project data.

RESEARCH DATA MANAGEMENT



Data Management

Here you find information about research data management and DMPs.

BORIS



BORIS Publications

Here you find information about the institutional repository of the University of Bern.

BORIS THESES AND DISSERTATIONS



Publish online

Learn how to publish your doctoral thesis online and open access.

SERVICES



Services

Learn about our many services: information, training and support.

OPEN ACCESS



OA

Here you find an overview of the subject area Open Access.

BERN OPEN PUBLISHING



Journals & Series

Here you find technical and administrative support for publishing books and journals.

IDENTIFIERS



ORCID & Co

ORCID IDs, DOIs, ISBNs and ISSNs make you and your research unique.

BORIS Portal

In detail – follow along



^b
UNIVERSITÄT
BERN

BORIS Portal

What we are working at

- Enable a workflow of sharing your information and documents with the administrative units of the university
- Enable to synchronize the information on your unibe-websites
- Embedding other identifiers like ARK

Thank you
for your attention

Bern University Library, Open Science
borisportal@ub.unibe.ch

u^b

b
UNIVERSITÄT
BERN

